

The Everest Premium Door Collection




Everest



Contents

- 03. Everest Door Collection
- 04. Everest Entrance Doors
- 05. Thermal Efficiency
- 07. Traditional Entrance Doors
- 11. Stable Doors
- 13. Contemporary Collection
- 14. Cool Contemporary
- 16. Our 70mm Door and Frame Colour Range
- 18. Our 70mm Glazing Range
- 28. Our 70mm Door Furniture Range
- 40. Thresholds, panels, sidelights and toplights
- 42. Our Door Range At A Glance



Everest Door Collection

Everest entrance doors are available in a great choice of materials, including uPVC, Aluminium, composite and timber. Choose from a range of stylish colours from classic Chartwell Green to contemporary Anthracite Grey. Whatever style and colour you choose our range of entrance doors are sure to make a good first impression

A front door is the entrance to your home so we take security very seriously. Our doors are tested to the latest security standards and for added peace of mind are Secured by Design, the Official Security Initiative.

Everest entrance doors are made to measure for a perfect fit with robust weather proof seals and the option of triple glazing, making them very thermally efficient, keeping the cold and draughts outside where they belong.



Everest Entrance Doors

Here at Everest we pride ourselves on always Fitting The Best. The best products, the best service and the best installation.

An Everest door can include all of the below

- 1

Door slab/leaf
- 2

Threshold
- 3

Vent Head with Head drip
- 4

Glass
- 5

Handle
- 6

High performance hinges
- 7

Multi-point locking system
- 8

Letterbox (with optional fishing guard)
- 9

Threshold cill extension (options available)
- 10

Door Frame
- 11

Weather proof seals

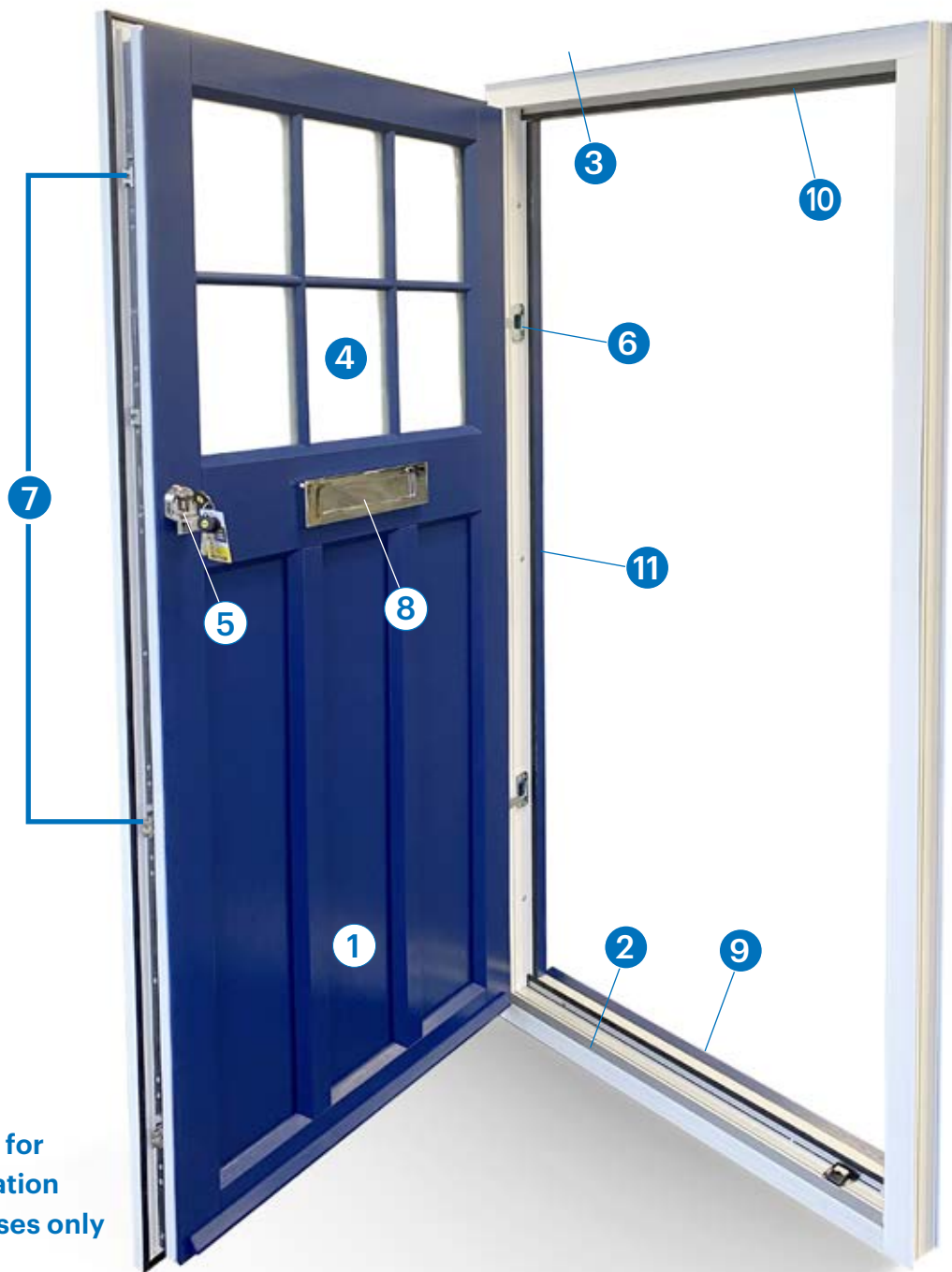
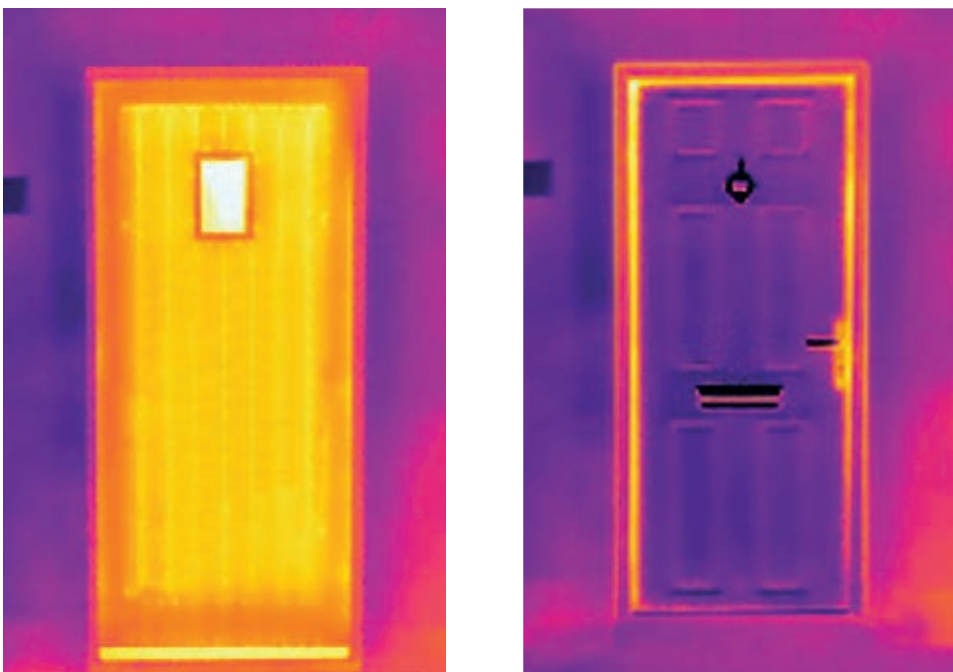


Image for illustration purposes only

The Thermal Efficiency



Old Door

New Everest Premium Door

If you don't have the latest door technology, you could be losing a lot more expensive heat than necessary. The bright areas in the image above shows you how much heat is lost through the old composite door compared to the Everest premium composite door in the image on the right.

Not to mention the ingenious, multiple draught-resistant seals which fit snugly into place when the door is closed, to minimise heat loss even further.

Once you own one, you'll realise there's nothing like closing an Everest door to give you that wonderful feeling of shutting out the chill and sealing in the cosiness. Your home will never feel the same again.

70mm Composite Entrance Doors



Portland
APL2



Dunluce 1
APA1



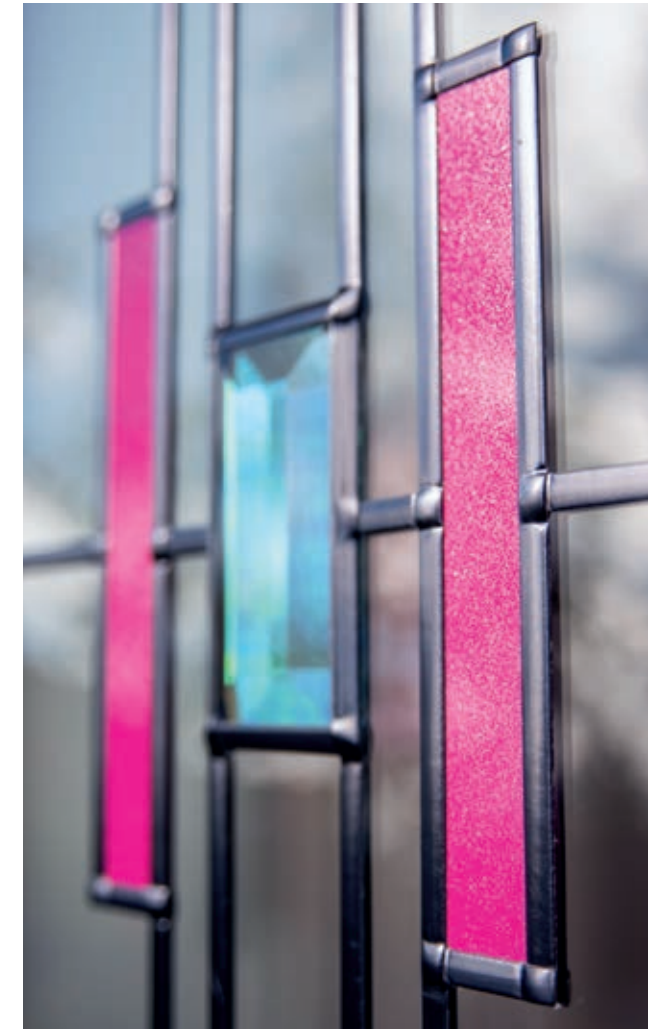
Chester 2
APC2



Dunluce 2
APA2

Elegantly timeless, the Everest Traditional Collection is designed to enhance homes with traditional good looks.

Amazing Glazing with traditional style



This elegant range of inspired doors adds a touch of class to traditional style properties, with their decorative detail, flawless finish and stylish glazing. This is a door that stands out from the crowd with great kerb appeal and stands the test of time.



Longthorpe 2
APG3



Chester 3
APC3



Dunluce 3
APA3



Rowton 2
APM2



Stable Doors



Penhurst
SD0



Otford
SD5 RG5 I



Hanwell Stable
APY4

Our Cottage range has been designed to make every country home complete. Available as traditional full-height doors or as a classic 'half-and-half' stable door, our Cottage range adds a rustic styling that creates the perfect entrance, blending beautifully into its surroundings.

Contemporary collection



Birr APTS33
Glass Code
SB26



Hanwell 2 APY2
Glass Code
RG46

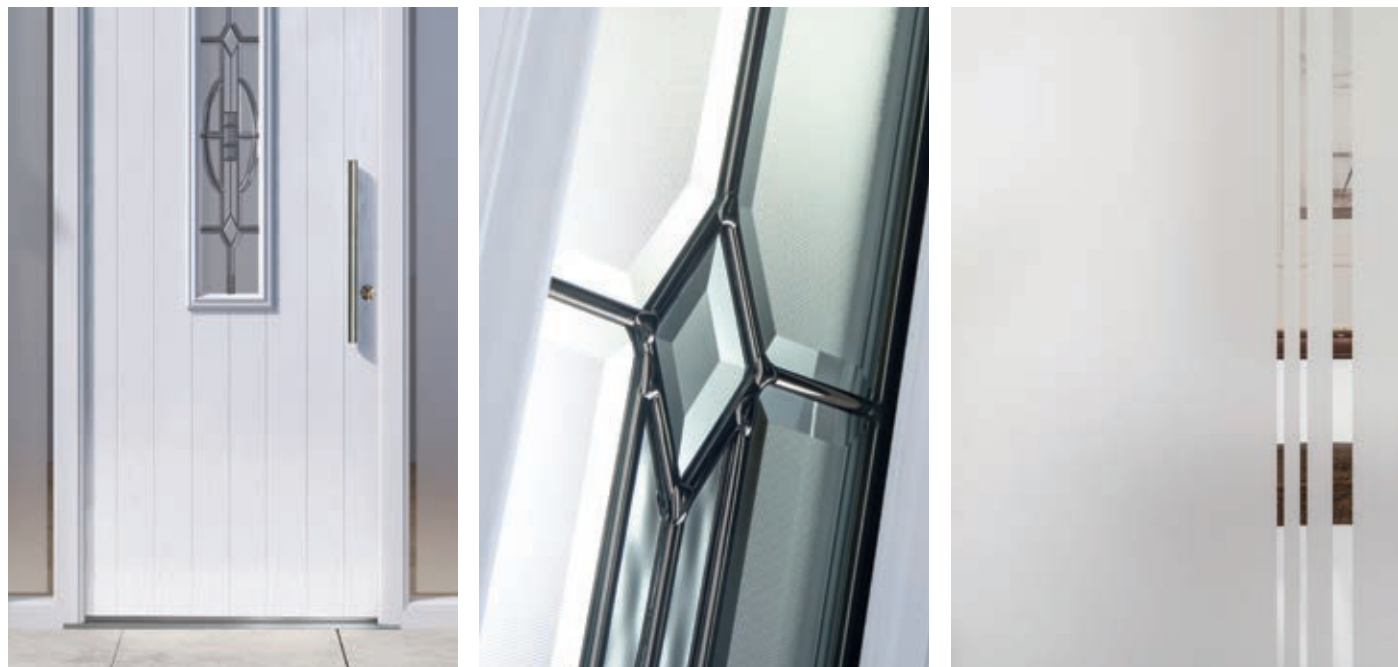


Birr APTS33
Glass Code
BO500

If you prefer a fresh, modern look, our Contemporary Doors are the perfect choice. Designed to be sleek and modern this stunning range creates a clean and current impression, effortlessly.

Available with a range of door furniture, choose from a modern lever handle or a contemporary stainless steel bar handle.

Cool Contemporary Doors and Glazing



Somerton
AMD2



Allington
APTS5



Mawes
APTS2



Mortham
APTS0

If you are looking for a door that simply stands out and creates an impact, our Exclusives sleek Contemporary range is the perfect style for you. Its ultra modern look provides a secure and stunning entrance to your home.



Beetham
APTS6



Leslie
APTS34



Lyndford
APTS28



Eldon
AMD5



Netley
APTS36



Lulworth
APTS29



Compton
APTS26

Our 70mm Door and Frame Colour Range

Check out our standard and premium colour palettes.

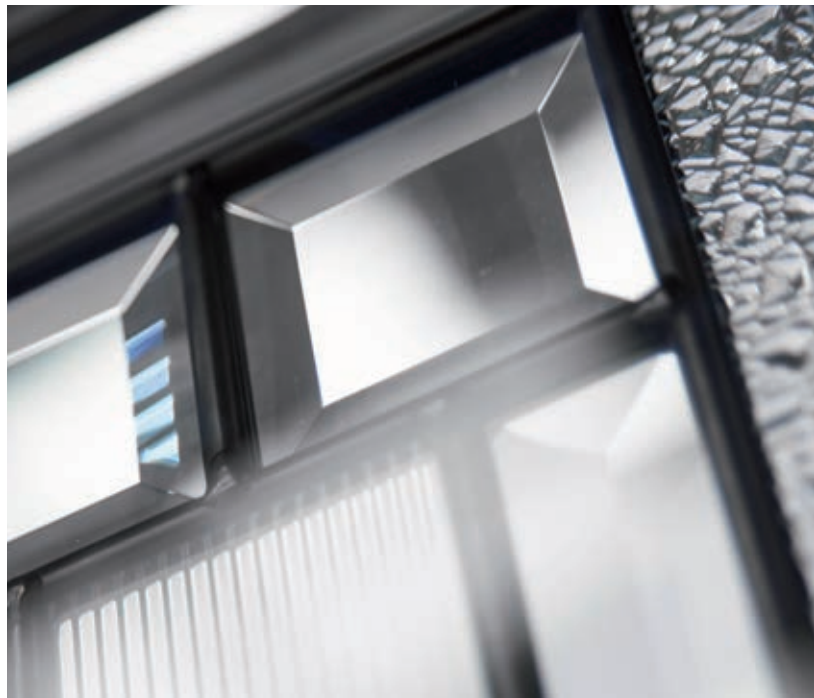
STANDARD COLOURS

Standard Everest Black 2 (Renolit Exofol MX 49116-101100)	Standard Anthracite Grey (Renolit 49122-011)	Standard Light Grey (Renolit 725105/167 - MXS0067)	Standard White (Halo System 10 Rustique 2 Smooth Frame Finish)	Standard Halo Foiled White (Halo System 10 Rustique 2 Renolit Exofol PX 02.20.91.000001-116801 Grained Frame Finish)	Standard Everest Cream 2 (Renolit Exofol PX 46835-101100)	Standard Colour Agate Grey Renolit Exofol S30.30.10.0061	Standard Burgundy (Renolit 3005-05-167)
Standard Oak (Cova 49158-011)	Standard Rosewood (Cova 49186-011 Piedmont A)	Standard Dark Green (Renolit 6125-05-167)	Standard Chartwell Green (Renolit 49246 - 101100)	Standard Steel Blue (Renolit 5150-05-167)	Standard Dark Red (Renolit 3081-05-167)	LOW MAINTENANCE To keep your Everest door looking great, gently wipe down your door with warm soapy water and a soft cloth.	

PREMIUM COLOURS

Premium Traffic Yellow (RAL 1023)	Premium Traffic Purple (RAL 4006)	Premium Light Blue (RAL 5012)	Premium Porcelain Blue (BS20C33)	Premium Pale Lilac (BS24C33)	Premium Heather Violet Pink (RAL 4003)	Premium Telemagenta Pink (RAL 4010)	Premium Mandarin Orange (BS06E51)
Premium Green Mist (BS12B17)	Premium Turquoise Blue (RAL 6033)	Premium Traffic Red (RAL 3020)	Premium Orchid Pink (BS04C33)	Premium Light Pink (RAL 3015)	Premium Antique Pink (RAL 3014)	Premium Pale Lime (BS12E51)	<div>Metallic Colours are not available. There is an extra charge for Premium and RAL/BS colours. We may not be able to match all RAL/BS colours.</div>

Every effort has been made to reproduce the colour of our Everest doors and the coloured film in the decorative glass designs. However, printing constraints will give rise to some colour deviation. For exact colour matching please request a colour sample from your approved supplier before purchase. Please note the grain on the GRP door does not replicate the grain on the frame as it is a PVC foil. The grain and colour on the Oak and Rosewood doors are not an exact match to the Oak and Rosewood PVC frames.



Our 70mm Glazing Range New Orleans Glass

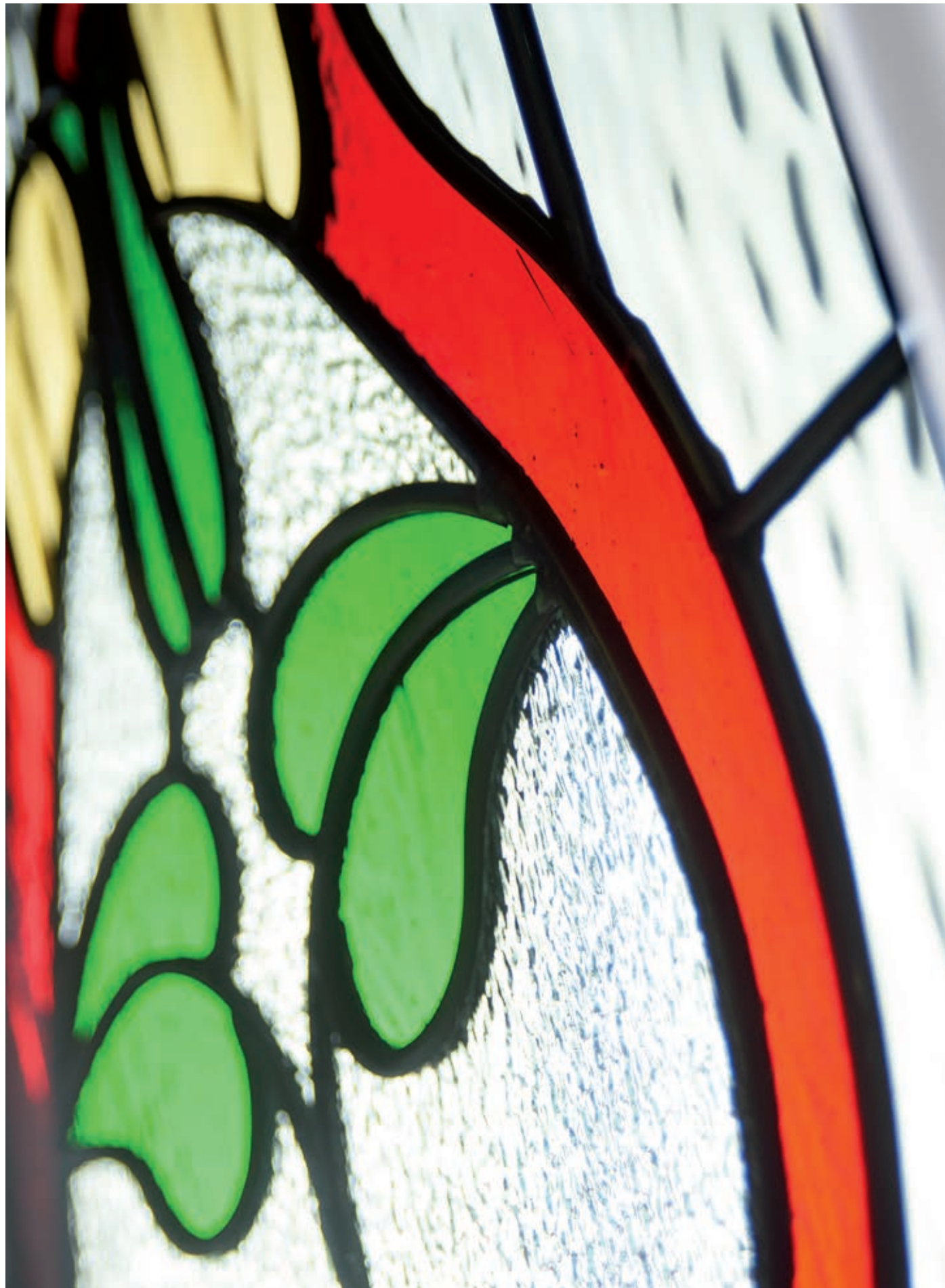


PREMIUM, HANDCRAFTED,
ELEGANT, GLASS DESIGN

The complex bevelled design combined with stunning textured glass creates a design with undoubted kerb appeal and 'Wow Factor'. New Orleans combines the opulence and architecturally inspired design flair associated with the 'Big Easy' and is undoubtedly set to become one of our most popular designs.

PRIVACY LEVEL 1 2 **3** 4 5

Beaumont Glass



GLASS DESIGN KEY FEATURES

Blackened Lead Cames
Spectrum Coloured Glass
Waterglass
Kasumi Textured Glass



PREMIUM, HANDCRAFTED, ELEGANT, GLASS DESIGN

The Beaumont is a very traditionally designed glass reminiscent of designs used in the Victorian period. Using a combination of vibrant coloured glasses against a background of softly rippled glass, finished off with blackened comes, this design is ideal for doors in period properties.

PRIVACY LEVEL 1 2 3 4 5

GLASS DESIGN
KEY FEATURES

Textured Bevelled Glass
Grey Bevelled Glass
Black-Chrome Plated Comes
Textured Glass
Clear Bevelled Glass



PREMIUM, HANDCRAFTED,
ELEGANT, GLASS DESIGN

This stunning contemporary design incorporates clear, textured and subtle grey glass in a striking design, where light beautifully refracts and reflects off the bevelled edges. The glass choices provide high levels of privacy whilst still allowing light to flood into your home. The design is manufactured using high gloss, black chrome coming.

PRIVACY LEVEL 1 2 3 4 5

Reflections Glass



Prairie Glass



GLASS DESIGN
KEY FEATURES

Clear Glass Bevels
Spectrum Grey Baroque Glass
Spectrum Granite Glass
Glue-Chip Bevels & Glue-Chip Glass
Polished Zinc Cameing



PREMIUM, HANDCRAFTED,
ELEGANT, GLASS DESIGN

Simplicity, balance and exceptional quality. The purity of this linear range draws its inspiration from Frank Lloyd Wright, one of America's greatest architects. Hints of cubism come together with leading edge glass technology to create a wonderful multi-textured finish and a surprisingly contemporary design.

PRIVACY LEVEL 1 2 3 4 5

Our new glazed GRP side panels add style and sophistication to your home.

The ultimate partner to your door. Perfectly match your door glass design with your sidelight glass using our latest innovation in sidelight design. The moulded glazing trim matches perfectly to the door and we ensure a designer look by lining the top of the door and side panel trims across the full width of your door set.



Everest side panels are made using high strength glass fibre laminate, utilising a combination of glass fibre weave, reinforced with magnesium silicate board and high density foam to ensure the ultimate in security and energy efficiency.

New GRP side panels



Max width: 550mm inc frame
Max height: same height as door
Min width: TBC
Min height: TBC

Witness lines are visible between the horizontal and vertical panels that make up the doors and side panels. Combined with our realistic grained finish, the witness lines add to the natural look of your door.

Side panels are only available with certain door styles and RG glass designs.

Our 70mm Door Furniture Range

Designed with care and crafted to last, our accessories have been created to complement our door collections. From traditional rustic metalwork to high-end polished chrome, you don't have to look further than the next few pages to complete your Everest door.



PREMIUM Architectural Door Furniture

Architectural Door Furniture
is available in 2 colours:
Chrome & Satin Silver

Door Handle shown in Chrome



Door Knocker and Push-in Letterplate
both shown in Chrome



In order to ensure the best quality accessories are used on Everest doors, Everest reserves the right to replace any of the above options as required. Hardware comes with manufacturer's warranty.

Our 70mm Door Furniture Range

PREMIUM Rose Gold Door Furniture

Door Handle shown in Rose Gold



Sweet Door Furniture is available in 5 colours: Rose Gold, Chrome, Black, Satin Silver and Gold.

Door Knocker shown in Rose Gold



Letterplate and Numeral shown in Rose Gold



PREMIUM Stainless Steel Door Furniture

Our stainless-steel door furniture is particularly suited to coastal areas with higher salt content in the air. Corrosion-resistant, just like the doors themselves, means minimal upkeep and maximum visual impact.

Door Handle shown in Stainless Steel



Door Knocker and Letterplate both shown in Stainless Steel



In order to ensure the best quality accessories are used on Everest doors, Everest reserves the right to replace any of the above options as required. Hardware comes with manufacturer's warranty.

Our 70mm Door Furniture Range

Contemporary Door Handles

Our range of modern, stainless steel and black handles will give your door a super-sleek look.



Lynx - Black Round Handle



Polaris - Black Square Handle



Antares - Stainless Steel Round Handle



Epsilon - Stainless Steel Square Handle



Waist high lock system with round escutcheon plate and Karcher lever handle.

Contemporary Bar Pull Handles

Table showing options for possible handle combinations:

Outside	Inside
Bar Handle + escutcheon plate	Bar Handle + escutcheon plate
Bar Handle + escutcheon plate	Escutcheon + finger pull only
Bar Handle + escutcheon plate	Lever Handle
Escutcheon plate and finger pull only	Escutcheon plate and finger pull only
Lever Handle	Lever Handle



1800mm Bar Handle



1200mm Bar Handle



600mm Bar Handle



1500mm Square Bar Handle



1200mm Black Bar Handle



1200mm Black Square Bar Handle



1200mm Off-set Square Bar Handle

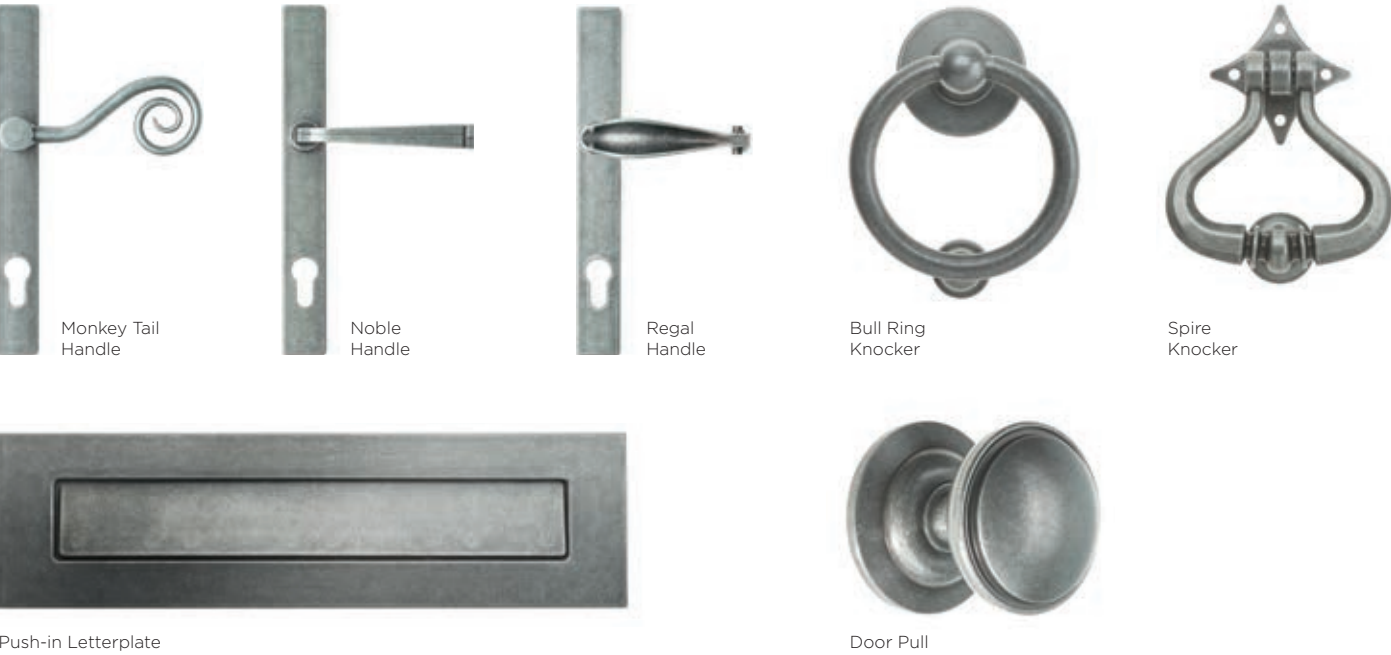
In order to ensure the best quality accessories are used on Everest doors, Everest reserves the right to replace any of the above options as required. Hardware comes with manufacturer's warranty.

Our 70mm Door Furniture Range

PREMIUM Forged Black Door Furniture



PREMIUM Pewter Door Furniture



Door Handles

Classic Lever Handles
(also available with split handle)



Classic Lever Pad Handles
(with split handle)




In order to ensure the best quality accessories are used on Everest doors, Everest reserves the right to replace any of the above options as required. Hardware comes with manufacturer's warranty.


Our 70mm Door Furniture Range

Door Knockers

Contemporary Knocker




Chrome Antique Black Black Bronze




Gold Satin Silver White

Scroll Knocker




Chrome Antique Black Black Bronze




Gold Satin Silver White

Slimline Knocker




Chrome Antique Black Black Bronze




Gold Satin Silver White

Urn Knocker

Also available with spyhole




Antique Black Black Bronze




Gold Satin Silver White

Lionshead Knocker



Chrome Antique Black Black Bronze



Gold Satin Silver White

Door Letterplates and Accessories

Letterplates



Chrome



Antique Black



Gold



Black



Satin Silver



Bronze



White

In order to ensure the best quality accessories are used on Everest doors, Everest reserves the right to replace any of the above options as required. Hardware comes with manufacturer's warranty.

Our 70mm Door Furniture Range

Escutcheon Plate
Shown in stainless steel.
Also available in brass.



Finger Pull
Shown in stainless steel.
Also available in black and brass.



Flag Hinge
Flag hinges are available in Black,
Bronze, White, Gold, Chrome,
Brown and Satin Silver



Security Chain



Gold

Numerals

Available in:
Anodised Silver
Antique Black
Black
Bronze
Chrome
Gold
Satin Silver
White



Chrome

Spyholes



Gold



Chrome



Black

Euro Rebate Butt Hinge

Butt hinges are available in Gold,
White, Chrome and Brown



BACKING GLASS OPTIONS

All of the door designs (except RG glass codes) featured throughout the brochure can be backed with a range of obscure glass to suit all requirements for energy efficiency, safety and privacy. This is our standard range but we can offer more styles upon request. Please note there may be an additional charge for non standard obscure glass patterns. There is no choice of backing glass for any of the RG glass code designs shown.



Minster



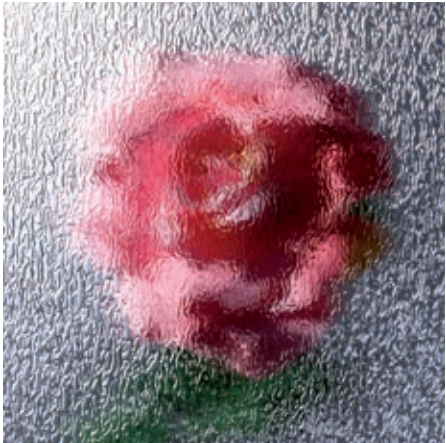
Flemish



Stippolyte



Cotswold



Contour



Satin

In order to ensure the best quality accessories are used on Everest doors, Everest reserves the right to replace any of the above options as required. Hardware comes with manufacturer's warranty.

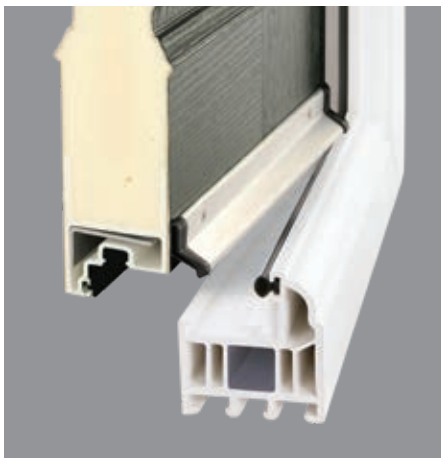
Please note Flemish glass once toughened can have a haze effect in the pattern, this is a normal part of the toughening process and is acceptable. Whilst care is taken to ensure that this brochure is as up-to-date and accurate as possible, no responsibility can be taken by Everest for any errors or omissions contained herein. In order to meet customer demand Everest reserves the right to change the supplier of patterned glass without prior notice.

Thresholds, panels, sidelights and toplights

THRESHOLD OPTIONS



MDS70 Threshold (25mm) Shown with ramp
Distance from bottom of door leaf to bottom of threshold 18mm



uPVC Low Frame Threshold
Distance from bottom of door leaf to bottom of threshold 27mm



uPVC Full Frame Threshold
Distance from bottom of door leaf to bottom of threshold 43mm

HALF AND QUARTER PANELS



Half Panel Sizing
APHP1

Min width - 585mm
Min height - 688mm
Max width - 900mm
Max height - 914mm



Quarter Panel Sizing
APQP1

Min width - 264mm
Min height - 688mm
Max width - 540mm
Max height - 900mm



Flat Panel Sizing
APFP1

Max width - 420mm
Max height - 885mm



T&G Panel Sizing
APTGH

Max width - 1026mm
Max height - 1089mm

SIDELIGHTS AND TOPLIGHTS

All decorative glass designs shown in doors with the RG code are available with a choice of sidelight and toplight options as shown. Due to the unique construction of the RG glass it is not possible to create matching sidelights or toplights.



Clear on Clear



Satin Backing Glass



Gluechip Toplight



Gluechip



Clear on Obscure (choice of six standard glass patterns)



Sandblasted with Clear Border (SB27)

Whilst care is taken to ensure that this brochure is as up-to-date and accurate as possible, no responsibility can be taken by Everest for any errors or omissions contained herein. All measurements must be verified by surveyor on site. Drainage options only apply to PVC thresholds. Mullions and toplights are face drained as standard.

Our Door Range At A Glance



Somerton
AMD2
(Glass ST61)



Lulworth
(Glass RG56)
APTS29



Mortham
APTS0



Birr
(Glass SB26)
APTS33



Hanwell 2
(Glass BO500)
APY2



Netley
(Glass FT82)
APTS36



Elsdon AMD5
(Glass SR30)



Beetham
(Glass RG18)
APTS6



Mawes
(Glass RG46)
APTS2



Allington
(Glass FT45)
APTS5



Lyndford
(Glass RG20)
APTS28



Leslie
(Glass SB27)
APTS34



Dunluce 1
APA1



Chester 3
(Glass BO501)
APC3



Rowton 2
(Glass LF549)
APM2



Dunluce 3
(Glass LF549)
APA3



Longthorpe 2
(Glass FT31)
APG3



Compton
(Clear Glass)
APTS26



Portland
(Glass LF515)
APL2



Dunluce 2
(Glass BO500)
APA2



Chester 2
(Glass FT29)
APC2



Penhurst
SD0



Otford
SD5 RG51



Hanwell Stable
APY4

